



## Cremona 22



390m<sup>2</sup> | 22sq

Aspire, Fraser Rise  
Lot 3028, Angelica Circuit

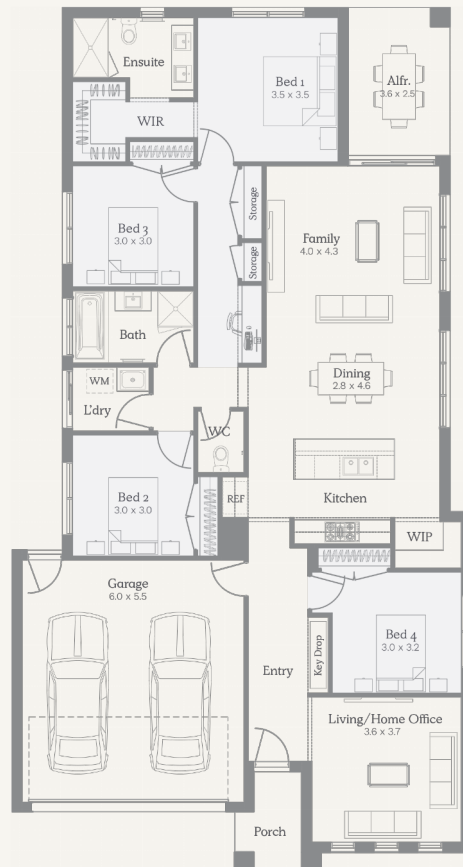


## Inclusions

Titles: Q4, 2023

Luxury inclusions:

- 2740mm high ceilings throughout ground floor
- LED Downlights to entry & living areas as per plan
- 40mm stone benchtops to the Kitchen, 20mm to Bath & Ens
- 900mm Electric European SMEG appliances inc. Dishwasher
- Double Glazing to all windows throughout
- Heating
- Brick infills above windows & doors to entire ground floor
- Rinnai solar hot water system with single roof panel
- Mobile charger point to master bedroom
- Provision for future car charging point
- Semi frameless shower screens
- Tiled shower bases to all showers
- Undermount sink to kitchen
- Upgraded sink mixer (Brushed nickle)
- Site cost allowance
- Facade



For more information please contact Ilona Tanti on 0417 912 015

Architectural designs, built with purpose

Images are artists impression only and may include items not supplied by Nostra Homes. Please refer to project inclusions list for full specifications.