

Ask us about
our titled land
exclusive offer!



Vittoria 36

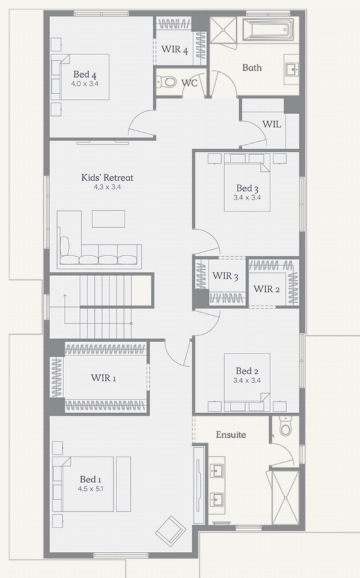


392m² | 36sq

Epping
Lot 20, Claudia Drive

Inclusions

- 25 Year Structural Guarantee
- 2740mm high ceilings to ground floor
- 2340mm internal high flush doors to ground floor
- LED Downlights to entry & living areas as per plan
- 40mm stone benchtops to the Kitchen, 20mm to Bath & Ens
- 900mm European SMEG appliances inc. Dishwasher
- Double Glazing to all windows throughout
- Heating & Cooling
- Brick infills above windows & doors to entire ground floor
- Rinnai solar hot water system with single roof panel
- Mobile charger point to master bedroom
- Provision for future car charging point
- Semi frameless showerscreens
- Tiled shower bases to all showers
- Undermount sink to kitchen
- Site cost allowance
- Façade
- Turn key option available



For more information please contact Alberto Hamid on 0497659986

Architectural designs, built with purpose

Images are artists impression only and may include items not supplied by Nostra Homes. Please refer to project inclusions list for full specifications.