



Portsea 22 (Lot 6935)

4 2 2

252m<sup>2</sup> | 21.93sq

Woodlea, Aintree  
Lot 6935, Marwari Way

**WOODLEA**

**Inclusions**

House and Land Package includes:

Turn key inclusions

25 Year Structural Guarantee

2590mm high ceilings to main living

LED Downlights to main living areas as per plan

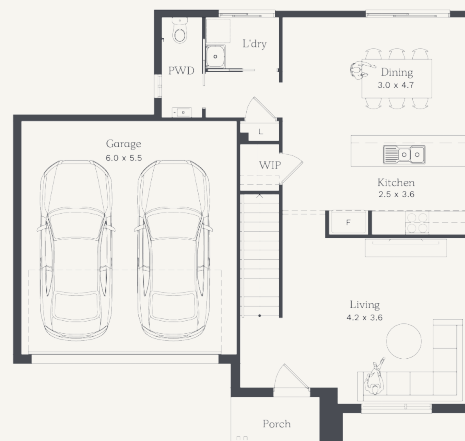
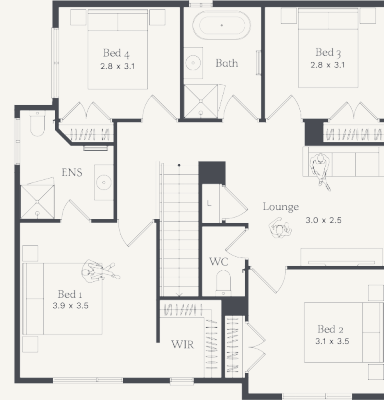
20mm mineral surface benchtops to the kitchen, bathroom and ensuite

Fisher & Paykel appliances

Split system to main living area

Letterbox

Low maintenance landscaping



For more information please contact Karl Playnsek on 0467852205

**Architectural designs, built with purpose**

Images are artists impression only and may include items not supplied by Nostra Homes. Please refer to project inclusions list for full specifications.