



Portsea 22 (Lot 6936)

4 2 2

252m² | 22.14sq

Woodlea, Aintree
Lot 6936, Marwari Way

WOODLEA

Inclusions

House and Land Package includes:

Turn key inclusions

25 Year Structural Guarantee

2590mm high ceilings to main living

LED Downlights to main living areas as per plan

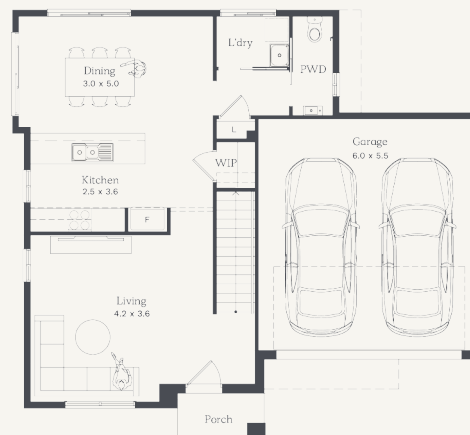
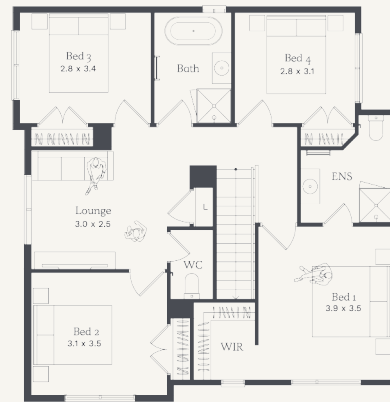
20mm mineral surface benchtops to the kitchen, bathroom and ensuite

Fisher & Paykel appliances

Split system to main living area

Letterbox

Low maintenance landscaping



For more information please contact Karl Playnsek on 0467852205

Architectural designs, built with purpose

Images are artists impression only and may include items not supplied by Nostra Homes. Please refer to project inclusions list for full specifications.