



Vittoria 36



392m² | 36sq

Westwood Walk, Frasier Rise
Lot 1721, Joust Way

House & Land

\$938,072

Inclusions

House and Land Package includes:

25 Year Structural Guarantee

Carpet and Tiles or Laminate flooring throughout

2740mm high ceilings to ground floor and Single Storey homes

Brickwork above all windows and doors to ground floor

SMART HOME inc. LED Downlights to entry & living areas as per plan

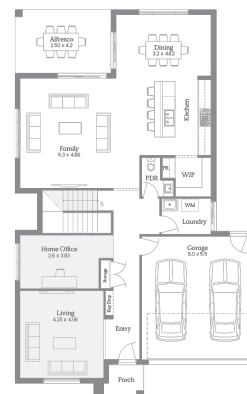
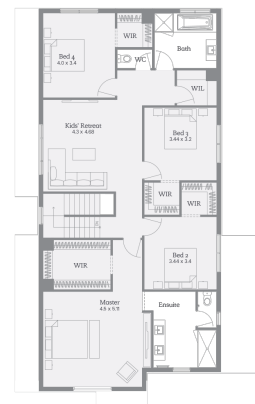
40mm stone benchtops to the kitchen, 20mm to bathroom and ensuite

900mm European SMEG appliances inc. Dishwasher

Double Glazing to all windows throughout

Heating and Cooling

3 coat paint system



For more information please contact Nafiza Ali on 0477979006

Architectural designs, built with purpose

Images are artists impression only and may include items not supplied by Nostra Homes. Please refer to project inclusions list for full specifications.